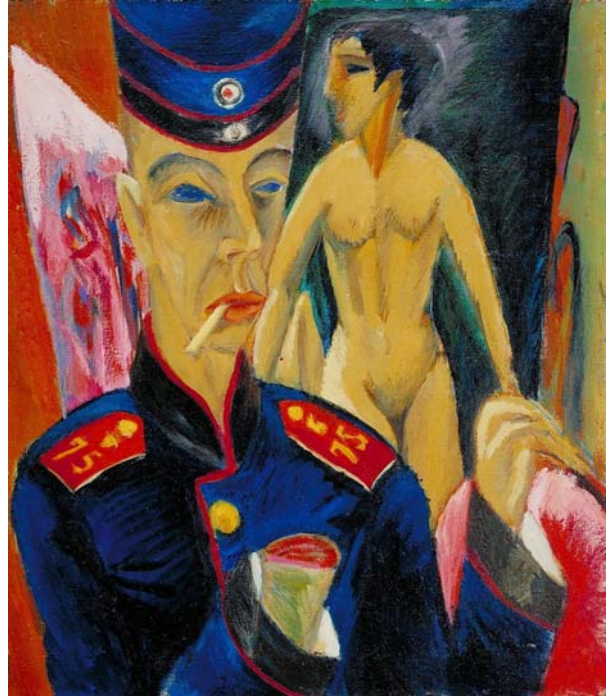


**Ernst Ludwig Kirchner** (German, 1880 - 1938)  
*Self-Portrait as a Soldier*, 1915  
Oil on canvas  
Charles F. Olney Fund, 1950.29

*Narrated by Abbe Schriber (OC 2009)*

*In the spring of 2009, the Allen Memorial Art Museum launched a series of audio downloads, focusing on works in the AMAM collection.*

*Many of these downloads highlight one of the greatest strengths of an academic museum: its student population. For many years, the AMAM has maintained a corps of student docents that give tours, and facilitate interactions with visitors of all ages. Many of these podcasts feature the critical voice of the docents in an ongoing dialogue with art in the museum's collection.*



*Student assistant Alexandra Michel (OC 2009) worked during the 2008-2009 academic year to record, edit, and mix these audio downloads. The AMAM wishes to extend its thanks to Alex for all of her hard work.*

Kirchner's renowned 1915 painting is one of his most immediately powerful, in it concurrent fear and anticipation of physical and mental breakdown as a result of World War I. Kirchner envisions losing his artistic vision and ability to paint, awash in a nightmarish scene of garish color and dressed in military uniform, his right hand a bloody stump. The distorted canvas and nude woman in the background convey not a picture of liberated sexuality and fruition, but a fundamental loss of confidence in self and masculinity. Perhaps more so than any other work in Kirchner's oeuvre, *Self Portrait as a Soldier* expresses how radically the war altered his artistic practice, provoking substance abuse, psychological trauma, and an unshakeable insecurity for the rest of his life.

For more information on Ernst Ludwig Kirchner, visit these websites:

[http://www.oberlin.edu/amam/Kirchner\\_SelfPortrait.htm](http://www.oberlin.edu/amam/Kirchner_SelfPortrait.htm)

<http://www.nga.gov/exhibitions/kirchnerinfo.shtm>

<http://www.bruecke-museum.de/englkirchner.htm>

<http://www.kirchnermuseum.ch/45803.html>